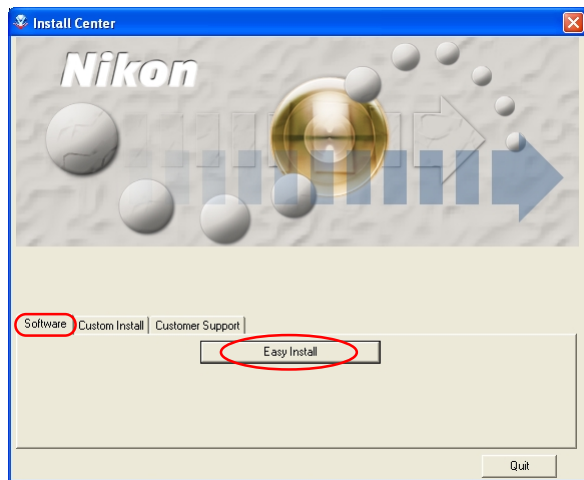


# Easy Install

## Step 1 : Select Easy Install



Click **Easy Install** in the **Software** tab to start the installation of Coolpix Camera Drivers<sup>\*1</sup> (all models except 990 and 880), Drivers for D1 Series Cameras, QuickTime 5.0.2 and Nikon View 5.

<sup>\*1</sup> **Windows 98SE only**

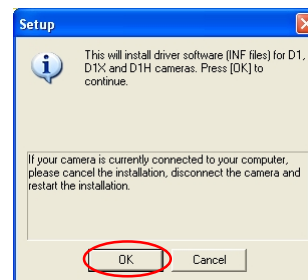
### ✓ Before installation

- Before installing Nikon View 5 and the device driver, make sure the camera is disconnected from the computer. If the Device Wizard launches when you connect a camera, click **Cancel** to exit the Wizard.
- You have turned off any virus-checking software that may be running.
- You have exited all other applications.

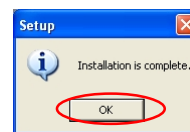
## Step 2 : Install Software

### 2.1 — Install Drivers for D1 series cameras

Installation of the device driver starts when you click **Easy Install**. The Setup dialog box below is displayed, asking you to confirm that a camera is not connected to your computer. Make sure a camera is not connected, and click **OK** to begin installation.

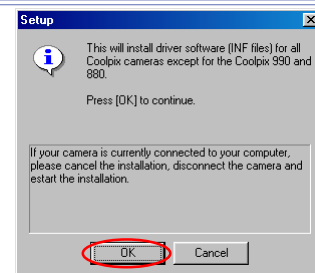


The dialog box shown below appears, indicating that installation is complete. Click **OK**.



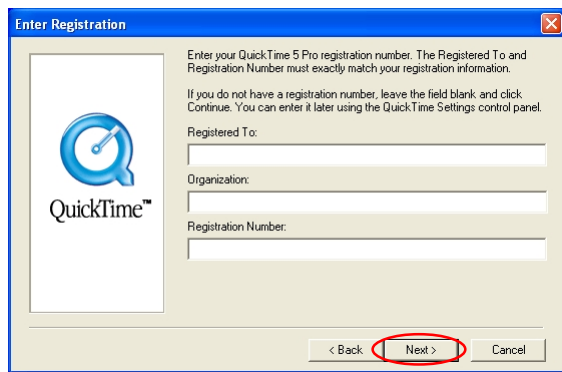
### Windows 98SE

If you are using Windows 98SE, drivers for all Coolpix cameras (all models except 990 and 880) will be installed. The dialog box shown right will be displayed. Click **OK** to continue.



## 2.2 — Installing QuickTime 5.0.2

The **Enter Registration** dialog box shown below appears, showing that you are now installing QuickTime 5.0.2. Note that you do enter registration information. Click **Next** to continue. Follow the remaining on-screen instructions to complete installation and proceed to the next step.



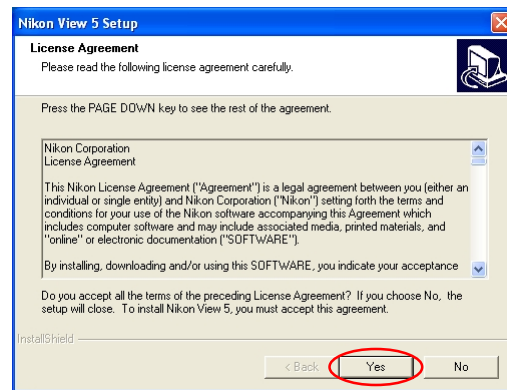
## 2.3 — Installing Nikon View 5

The license agreement shown below appears, showing that you are now Installing Nikon View 5.

### I — Accept the license agreement

When you start installation of Nikon View 5, the license agreement is displayed.

Read the agreement carefully, and click **Yes** if you wish to continue installation.



### Existing versions of Nikon View

If an older version of Nikon View is installed on your computer, it must be uninstalled before installing Nikon View 5.

Nikon View 5 does not support connection of COOLPIX950, 910, 900, 800, or 700 digital cameras.

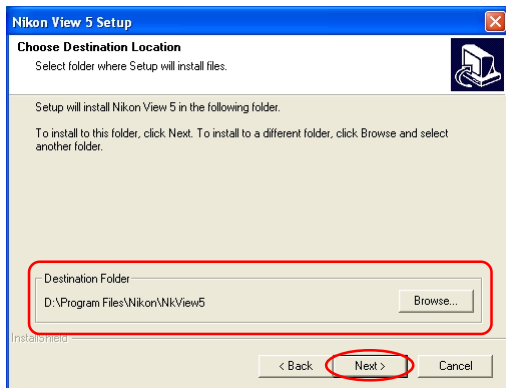
Nikon View 5 can however be used to view photographs taken with these cameras if the camera memory card is inserted into a digital camera that Nikon View 5 supports.



## 2 — Choose a location for Nikon View 5

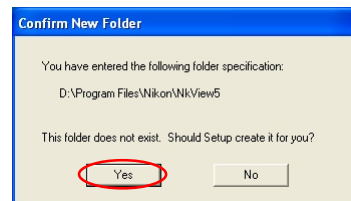
The folder to which Nikon View 5 will be installed is shown in the **Destination Folder** area. To install to this folder, click **Next**.

To select a new folder, click the **Browse** button and navigate to the desired location.



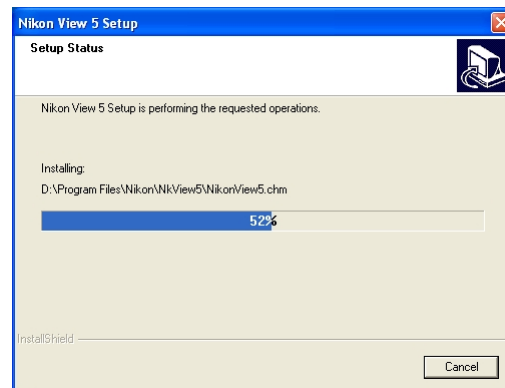
## 3 — Create the destination folder

If the folder destination folder specified in the previous step has not yet been created, you will be asked whether you want to create the folder. Click **Yes** to create the folder automatically and proceed to the next step.



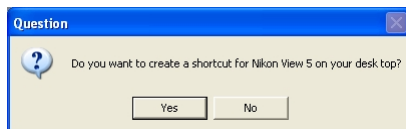
## 4 — Start installation

While installation is in progress, the dialog shown below will be displayed.



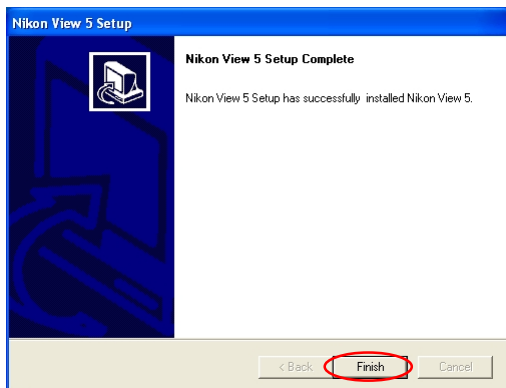
## 5 — Create a shortcut icon

When the progress indicator reaches 100%, the dialog shown below appears. Click **Yes** to create a shortcut, allowing you to start Nikon View 5 directly from an icon on the desktop. If you do not want to create a shortcut, click **No**.



## 6 — Complete the installation

A dialog box appears indicating that installation of Nikon View 5 is complete. Click **Finish**.



## 2.4 — Restart your computer

The dialog box shown below appears. Select **Yes** to restart your computer.

The Easy Install procedure is now complete.

